



JUNO
CORP

Corporate Presentation

January 2025

Disclaimer

This presentation of Juno Corp. (“Juno” or the “Company”) is for information only and shall not constitute an offer to buy, sell, issue or subscriber for, or the solicitation of an offer to buy, sell, issue or subscribe for any securities in any jurisdiction in which such offer, solicitation or sale would be unlawful.

The information contained herein is subject to change without notice and is based on publicly available information, internally developed data and other sources. Where any opinion or belief is expressed in this presentation, it is based on the assumptions and limitations mentioned herein and is an expression of present opinion or belief only. No warranties or representations can be made as to the origin, validity, accuracy, completeness, currency or reliability of the information. The Company disclaims and excludes all liability (to the extent permitted by law) for losses, claims, damages, demands, costs and expenses of whatever nature arising in any way out of or in connection with the information in this presentation, its accuracy, completeness or by reason of reliance by any person on any of it. This presentation should not be construed as legal, financial or tax advice to any individual, as each individual’s circumstances are different. Readers should consult with their own professional advisors regarding their particular circumstances.

There are certain risks inherent in an investment in the securities of the Company that prospective investors should carefully consider before investing in the securities of the Company.

Forward-Looking Information

This presentation of Juno contains “forward-looking information” within the meaning of applicable Canadian securities legislation and “forward-looking statements” within the meaning of applicable United States securities legislation, together, “forward-looking statements”. Such forward-looking statements contain known and unknown risks, uncertainties, and other factors that may cause our actual results, performance, or achievements, or developments within our industry, to differ materially from the anticipated results, performance, or achievements expressed or implied by such forward-looking statements. Forward-looking statements are statements that are not historical facts and are generally, but not always, identified by the words “expects”, “aims”, “plans”, “anticipates”, “believes”, “intends”, “estimates”, “projects”, “potential”, and similar expressions, or that conditions “will”, “would”, “may”, “could”, or “should” occur. Forward-looking statements included in this presentation include, but are not limited to: (i) projected performance of the Company, including statements with respect to the Company’s share price; (ii) the expected development of the Company’s projects, including expectations regarding drilling and exploration activities; (iii) execution of the Company’s vision and growth strategy, including with respect to any future activity; (iv) sources and availability of third party financing for the Company’s projects; (v) completion of work currently underway, in development or otherwise under consideration; and (vi) future liquidity, working capital, and capital requirements. Information inferred from the interpretation of exploration results and information concerning potential mineralization may also be deemed to be forward-looking statements, as such information constitutes a prediction of what might be found to be present if a project is actually developed. There can be no assurance that such statements will prove to be accurate. Actual results and future events may differ materially from those anticipated in such statements and readers are cautioned not to place undue reliance on these forward-looking statements that speak only as of their respective dates. Important factors that could cause actual results to differ materially from the Company’s expectations could include among others: risks related to fluctuations in mineral prices; uncertainties related to raising sufficient financing to fund planned work in a timely manner and on acceptable terms; changes in planned work resulting from weather, logistical, technical, or other factors; the possibility that results of work will not fulfill expectations and realize the perceived potential of the properties in question; political uncertainty; the Company’s inability to obtain property rights and interests as currently proposed or at all; uncertainties in the estimation of any potential future mineral resources or reserves; the possibility that required permits may not be obtained in a timely manner or at all; the possibility that capital and exploration costs may be higher than estimated and may preclude or render future exploration and development uneconomic; risk of accidents, equipment breakdowns or labour disputes or other unanticipated difficulties or interruptions; the possibility of cost overruns or other unanticipated expenses in work programs; the risk of environmental contamination or damage resulting from the Company’s operations; risks associated with title to mineral properties; risk associated with the COVID-19 pandemic; and other risks and uncertainties discussed elsewhere in the Company’s documents made publicly available from time to time. These statements are based on a number of assumptions; including assumptions regarding general market conditions, the availability of financing for proposed transactions and programs on reasonable terms, and the ability of outside service providers to deliver services in a satisfactory and timely manner. Forward-looking statements are based on the beliefs, estimates, and opinions of the Company’s management on the date the statements are made. Except as expressly required by applicable securities laws the Company undertakes no obligation to update these forward-looking statements in the event that management’s beliefs, estimates, opinions or other factors, should change.

Public Data

This presentation also contains or references certain industry data which is based upon information from independent industry publications, market research, analyst reports and surveys and other publicly available sources. Although the Company believes these sources to be generally reliable, such information is subject to interpretation and cannot be verified with complete certainty due to limits on the availability and reliability of raw data, the voluntary nature of the data-gathering process and other inherent limitations and uncertainties. The Company has not independently verified any of the data from third-party sources referred to in this presentation and accordingly, the accuracy and completeness of such data is not guaranteed.

Confidentiality

This presentation is confidential and is being provided to you solely for your information and may not be reproduced, in whole or in part, in any form or forwarded or further distributed to any other person. Any forwarding, distribution or reproduction of this presentation, in whole or in part, is unauthorized. By accepting and reviewing this presentation, you acknowledge and agree (i) to maintain the confidentiality of this presentation and the information contained herein, (ii) to protect such information in the same manner you protect your own confidential information, which shall be at least a reasonable standard of care, and (iii) to not utilize any of the information contained herein except to assist with your evaluation of the Company. This version of the presentation supersedes and replaces any and all versions of this presentation previously provided to you.

Qualified Person

Scott Zelligan, who is a “qualified person” as defined under National Instrument 43-101 - Standards of Disclosure for Mineral Projects, has reviewed and approved the scientific and technical information in this presentation. Mr. Zelligan has verified the data disclosed in this presentation and no limitations were imposed on his verification process.



▶ Juno's Timeline: Milestones in Motion



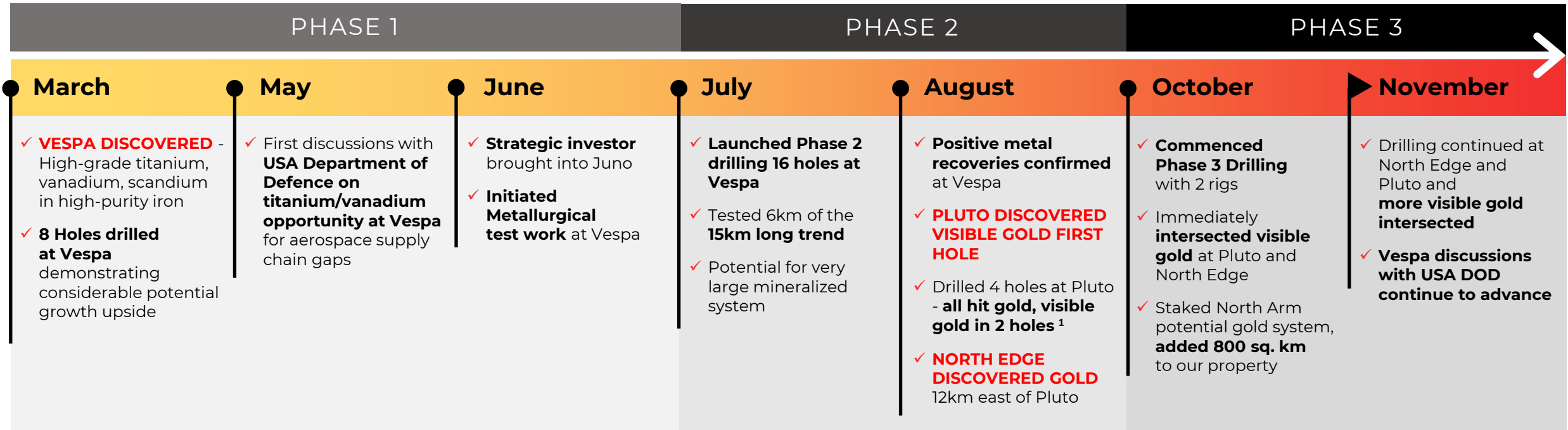
PLUTO HOLE 1
3.9m @ 60gpt Au
Incl. 0.6m @ 370gpt Au¹

(1) See full drill results in Appendix A.

Gold doesn't need a road!

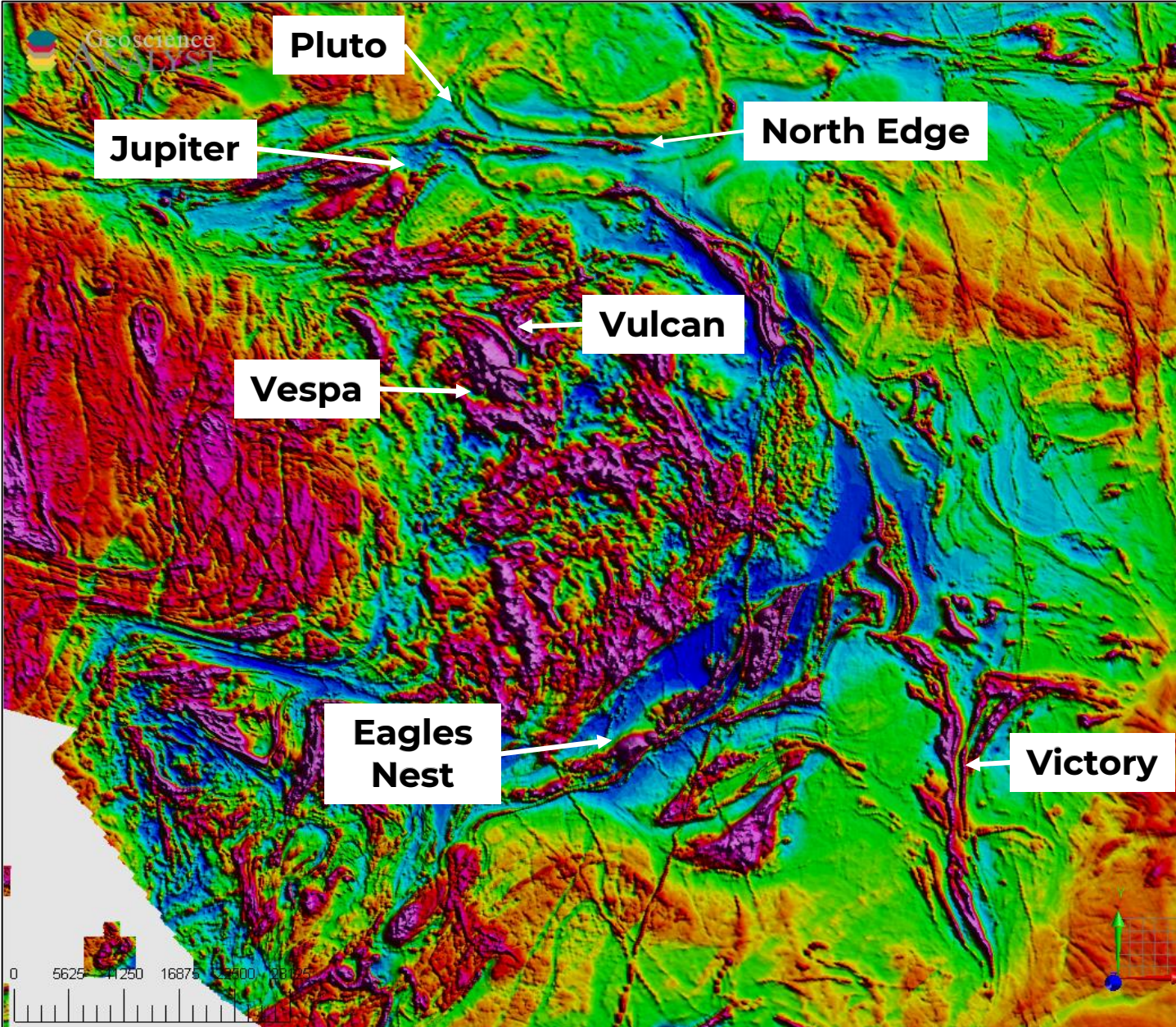
▶ New Discovery: North Arm Ring of Fire

In **2024** we have achieved
MAJOR ADVANCEMENTS
3 DISCOVERIES MADE



(1) See full drill results in Appendix A.

Rapid Development



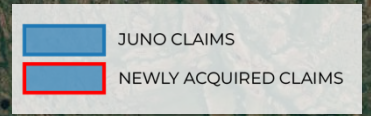
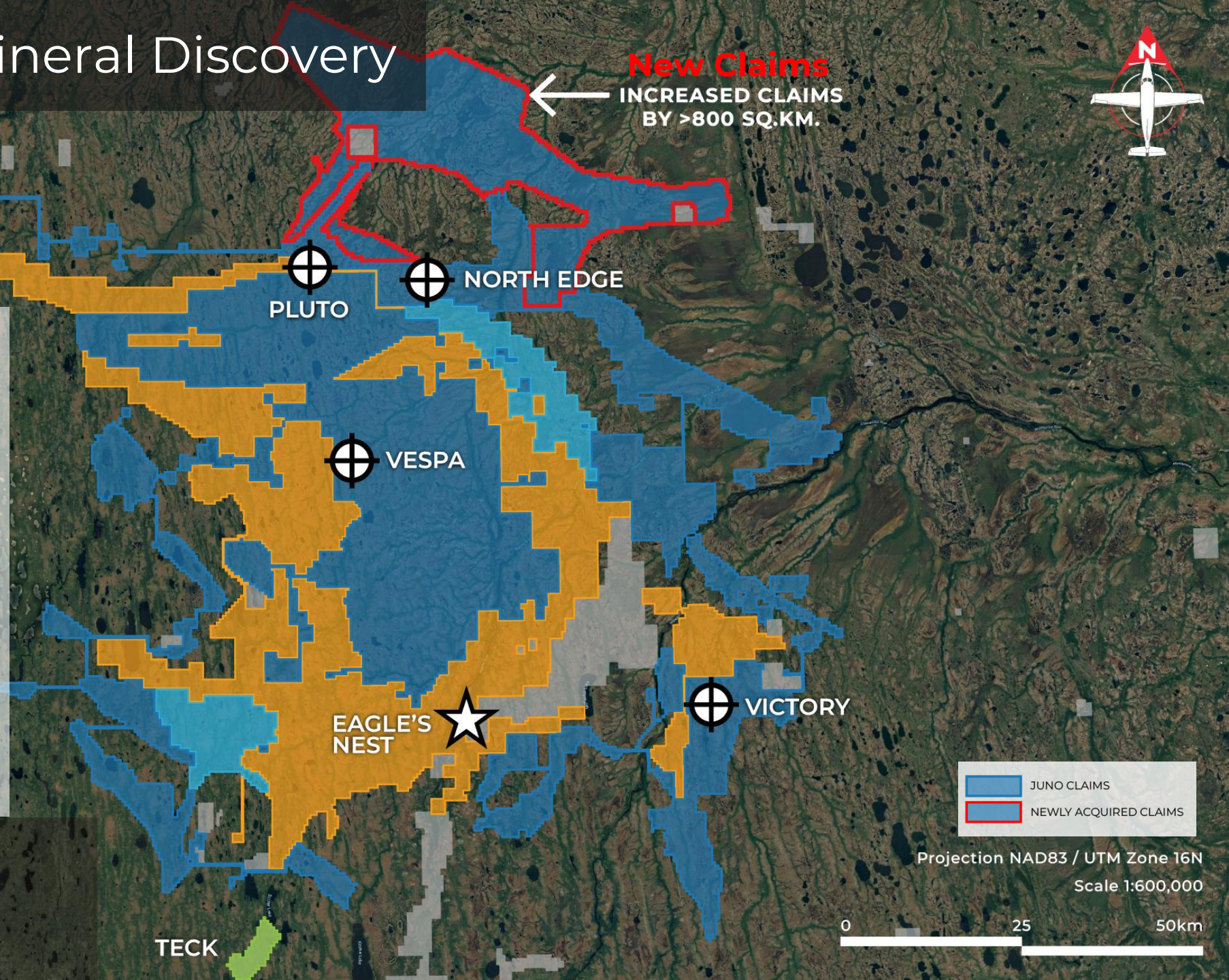
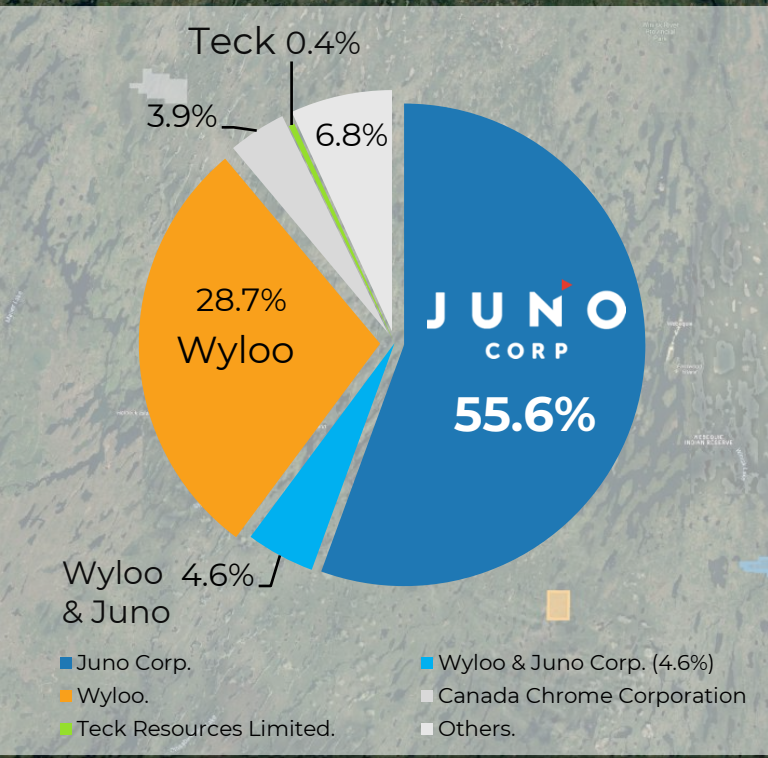
A Unique Opportunity

- Unexplored until 2000's
- Potential generational opportunity hidden under cover
- 3 Billion years of metal making processes overlapped in one area
- 15 distinct critical and precious metals found... so far
- Juno making new discoveries now

▶ Ring of Fire Recap: **Metal Rich & Untouched**

2024 Critical Mineral Discovery

New Claims
INCREASED CLAIMS
BY >800 SQ.KM.



Projection NAD83 / UTM Zone 16N
Scale 1:600,000





OUR EDGE

- We can get in, test a target and **move to the next**
- No one has ever used this in the Ring of Fire, **until Juno**

QUICK MOVES

- **Less helicopter trips** to move
- Some parts **move by snowmobile**

POWERFUL

- Drilled 10m holes to start **now 250m holes**
- Made **multiple discoveries** already

HUGE FUEL EFFICIENCY

- Uses **less than a quarter of fuel** vs a full rig
- **Saves** a lot of \$\$ and time

Transformed from Scout Rig to **Discovery Drill** - gives us a first look at never seen before rocks

► Our Exploration Advantage: **Juno Drills**

▶ **NEW: Critical Mineral Powerhouse**



VULCAN

Nickel-copper-platinum-palladium

SATURN

Titanium-vanadium-iron

VESPA

● Previous Juno Drillhole
○ 2024 Drillhole
— Vespa Mineralized Traces

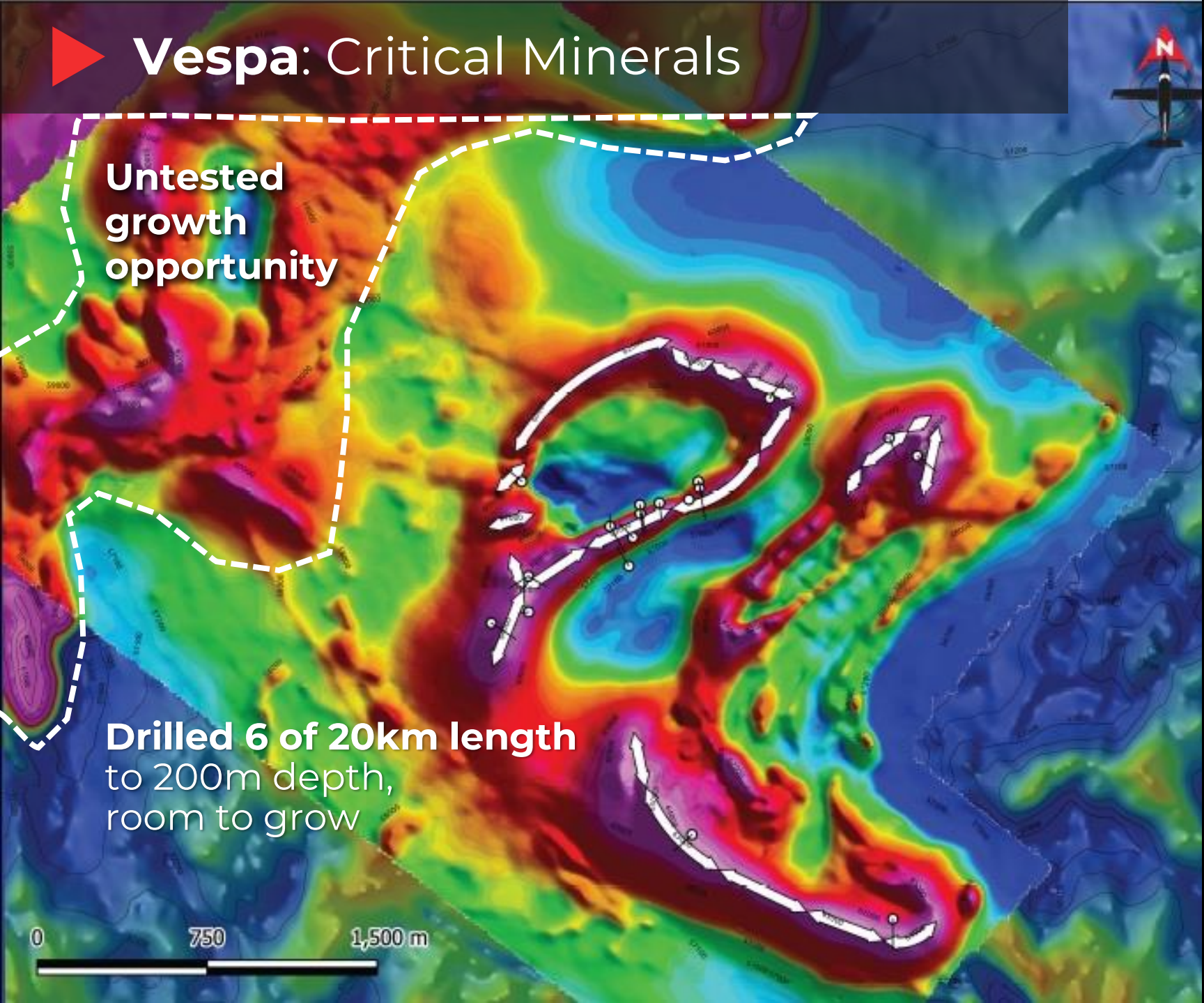
0 500 1,000 1,500 m

Scale 1:35,000

New Critical Mineral Complex

- 9 Critical Minerals discovered to date
- High-grade titanium, vanadium, high-purity iron and scandium
- Large growth potential and system extends 10km to the east
- Early days of exploration here
- Similar geology to Bushveld Complex (S. Africa)

▶ Vespa: Critical Minerals



Untested
growth
opportunity

Drilled 6 of 20km length
to 200m depth,
room to grow

Huge Aerospace Potential

Two Metal Products

High-grade vanadium
(65% high-purity iron
and vanadium 2%)

High-grade titanium
(65% - 70% TiO₂)
with scandium (+75 gpt)

Note: See metallurgical work data in Appendix A.

The background of the slide features two Sikorsky Black Hawk helicopters in flight. They are shown from a low-angle perspective, flying towards the viewer. The helicopters are olive drab in color. The main rotor blades are blurred due to motion, and the tail rotors are also visible. The sky is a pale, clear blue.

Vespa Next Steps

- Generate bulk titanium concentrate for **aerospace metals testing**
- Complete White Paper on Vespa to **facilitate government grants/support** (Ontario, Canada and USA)
- **Build partnerships** with aerospace suppliers and manufacturers
- **Complete 3D model** of Vespa high-grade and halo mineralized bodies

Unique opportunity with USA aerospace supply chain



PLUTO HOLE 1
3.9m @ 60gpt Au
Incl. 0.6m @ 370gpt Au¹

(1) See full drill results in Appendix A.

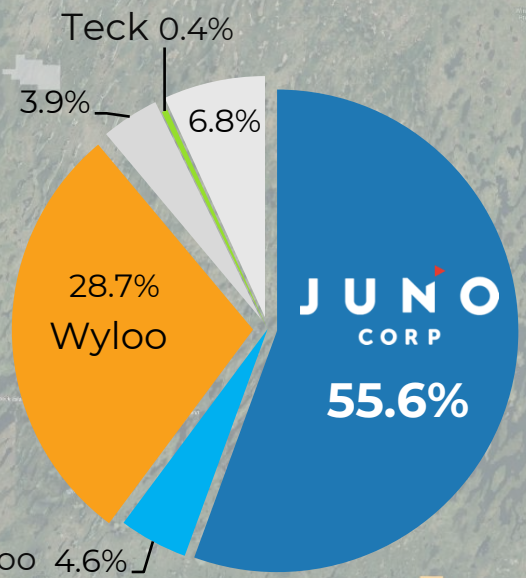
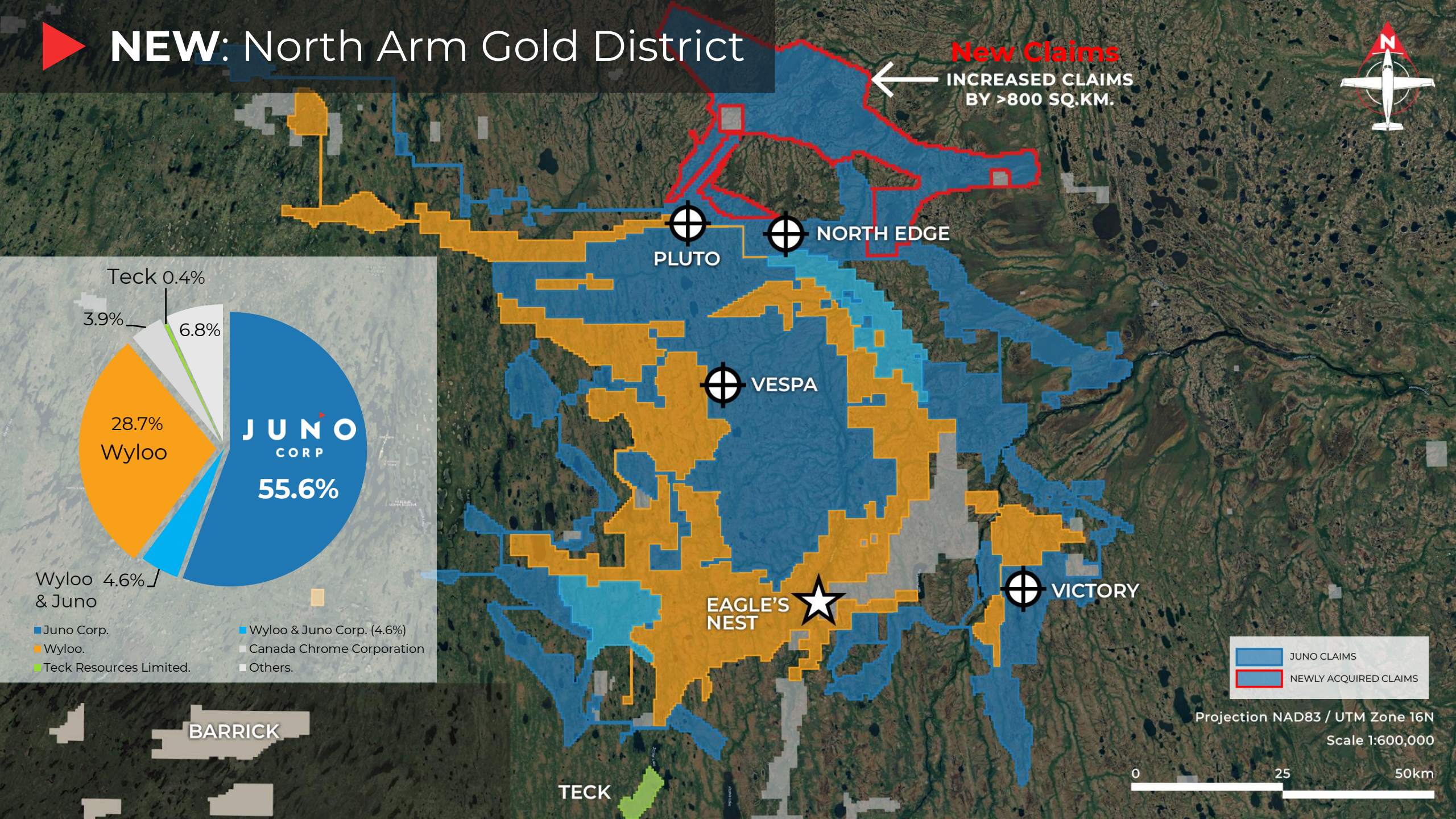
Gold doesn't need a road!

▶ New Discovery: North Arm Ring of Fire

NEW: North Arm Gold District

New Claims

INCREASED CLAIMS BY >800 SQ.KM.



- Juno Corp.
- Wyloo.
- Teck Resources Limited.
- Wyloo & Juno Corp. (4.6%)
- Canada Chrome Corporation
- Others.

- JUNO CLAIMS
- NEWLY ACQUIRED CLAIMS

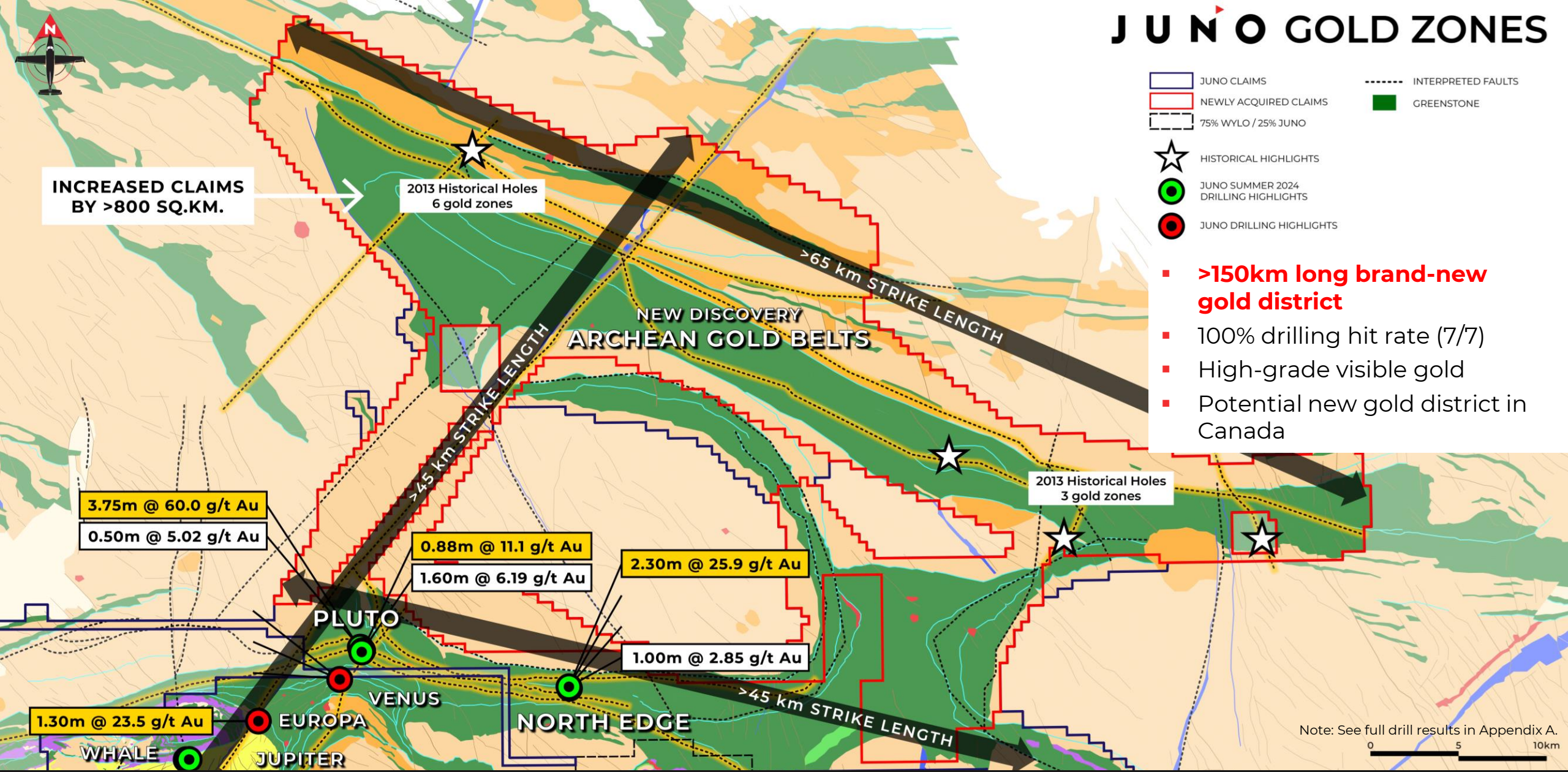
Projection NAD83 / UTM Zone 16N
Scale 1:600,000



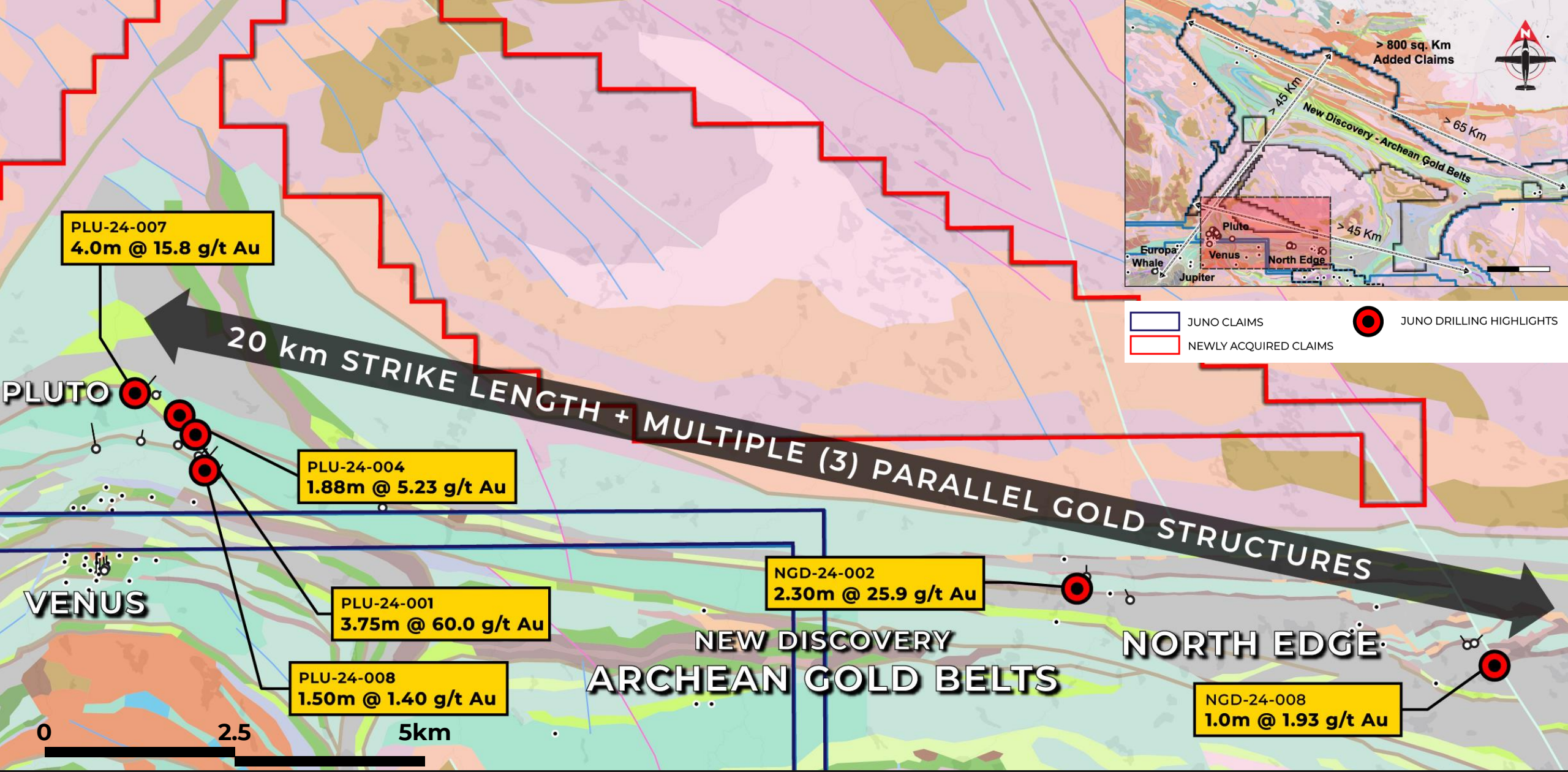
BARRICK

TECK

JUNO GOLD ZONES



▶ An Emerging Gold District



► Gold Discovery Area – Pluto & North Edge

**GOLD:
NORTH ARM**

Immediate
next steps

+4,600 sq km

Prime for
discoveries

JUNO
CORP

Unleashing the **Potential** of the **Ring of Fire**

Vespa

Critical Mineral
Advancement

Track Record

3 Discoveries
in 2024

Juno's Next Steps



> **\$32M**

CASH IN HAND
Including new partner



**HIGH GRADE
GOLD POTENTIAL**

**HUGE GOLD DISTRICT
POTENTIAL**



**LEADING
CRITICAL MINERALS**

EXPLORATION IN ONTARIO



STRONG SUPPORT

**FROM SHAREHOLDERS,
FIRST NATIONS &
ONTARIO GOVERNMENT**



**PHASE 3 DRILLING
HITTING ALREADY**

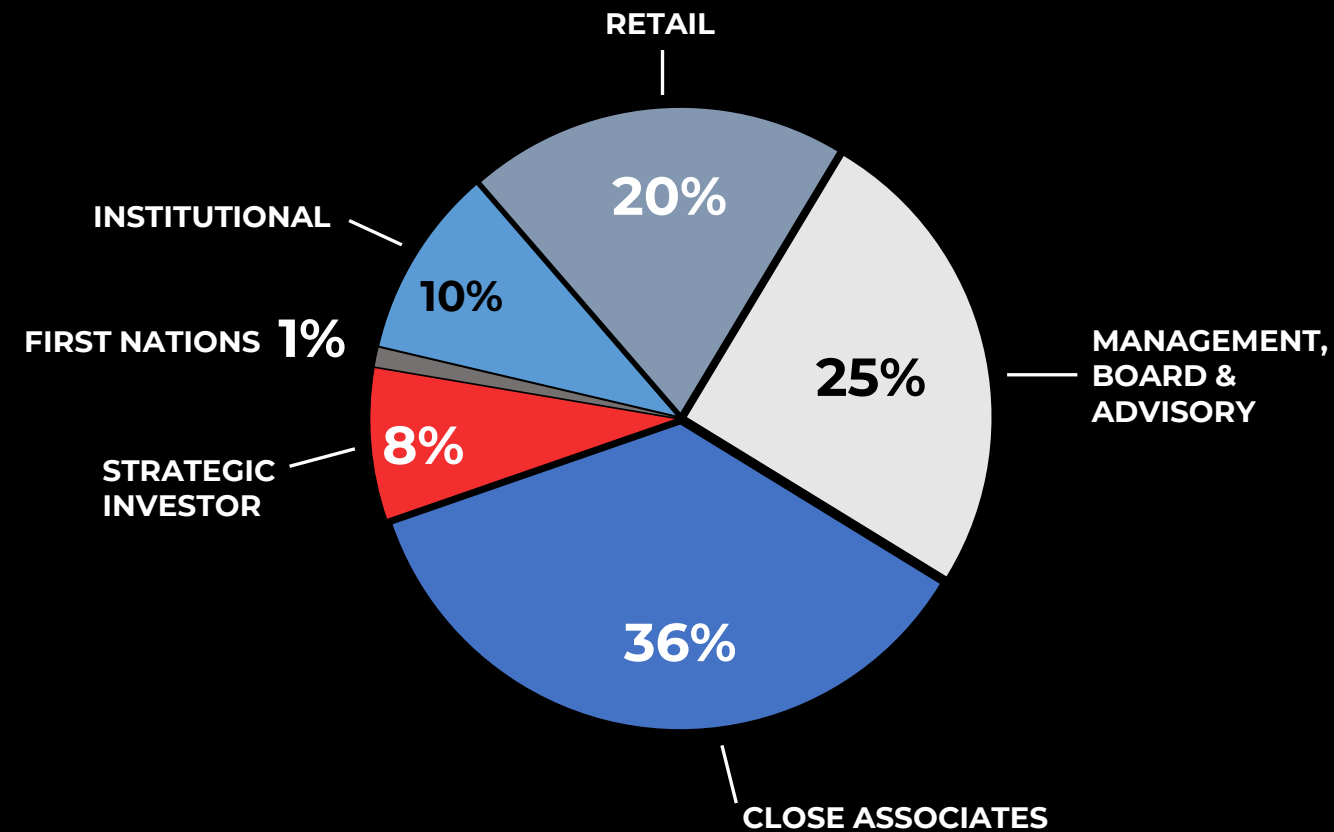


INCREDIBLE TIMING

**WITH MARKET PRICES
& DEMAND**

Juno's **Exceptional Momentum** – Major Advancements and Rapid Development

▶ **Financed, Focused & Uncovering Potential**



CAPITAL STRUCTURE (C\$)

At January 13, 2025

Basic Shares Outstanding	75.0M
Options & RSUs Outstanding	9.6M
Warrants Outstanding	0.70M
Cash Balance	\$32.0M

\$188M market capitalization
(recent financings at \$2.50/share)

► **Corporate Structure**



Terry MacGibbon

Non-Executive Chairman

Founder of FNX Mining, Torex Gold Resources, TMAC Resources and INV Metals. Inducted into the Canadian Mining Hall of Fame, in 2018.



Robert Cudney

Chief Executive Officer and Board Director

Founder of FNX Mining, President of Northfield Capital. Recipient of the Bill Dennis Award for the discovery of the Bruce Channel Deposit.



Ernie Eves

Board Director

Former Premier of Ontario (2002-2003) and Ontario Finance Minister (1995-2001).



Daniel Noone

Board Director

President & CEO of G2 Goldfields, former VP Exploration of Guyana Goldfields.



Jay Goldman

Board Member

Partner, Cassels Brock & Blackwell LLP.



Jacob McKinnon

President and Chief Operating Officer

Worked in the Ring of Fire since 2003 executing large scale exploration projects.



Michael Leskovec

Chief Financial Officer

CFO of Northfield Capital, former officer of Gold Eagle Mines.



Jeremy Niemi

Chief Strategy Officer

Former VP Geology for Noront Resources during Eagle's Nest discovery.



Fraser Laschinger

VP Corporate Development

CEO of Voyageur Mineral Explorers.

- The Juno team has a remarkable track record.
- The team is credited with the original discovery and naming of the Ring of Fire in 2007.
- **Collectively taken six junior miners from pennies to billion-dollar market successes.**

 **Proven Management Team**

The background of the slide is a dark night sky featuring a vibrant green aurora borealis. The aurora consists of several horizontal, wavy bands of light that glow with a bright green hue. In the foreground, the dark silhouettes of evergreen trees are visible against the bottom edge of the frame.

JUNO CORP

Discovering metals that power our planet

APPENDIX A – Drilling Highlights: North Edge & Pluto

	Hole	From	To	Length	Au g/t (PA)	Au g/t (FA)	Au g/t (Screen)
SUMMER	NDG-24-001	113.00	116.00	3.00		0.17	
	NDG-24-001	134.00	134.70	0.70		0.12	
	NDG-24-002	14.25	16.75	2.50		0.13	
	NDG-24-002	19.47	21.74	2.27		25.93	
	including	19.47	20.27	0.80		72.90	
	NDG-24-002	132.00	132.87	0.87		0.76	
FALL	NDG-24-003	34.71	36.12	1.41	0.07	0.10	
	NDG-24-003	93.20	95.25	2.05	1.23	1.71	
	NDG-24-004	103.00	103.60	0.60	0.16	0.15	
	NDG-24-004	183.00	187.19	4.19	0.38	0.25	
	NDG-24-005	72.50	74.00	1.50	0.28		
	NDG-24-005	125.20	126.15	0.95	0.29		
	NDG-24-005	207.00	208.07	1.07	0.05	0.10	
	NDG-24-006	29.00	30.50	1.50	0.10		
	NDG-24-006	108.50	109.50	1.00	0.19	0.13	
	NDG-24-007	70.35	71.30	0.95	0.91	0.66	
	NDG-24-007	106.00	107.00	1.00	0.10	0.09	
	NDG-24-007	127.00	128.50	1.50	0.10	0.04	
	NDG-24-007	131.50	133.00	1.50	0.14	0.02	
	NDG-24-007	144.00	145.50	1.50	0.24	0.50	
	NDG-24-008	54.30	55.65	1.35	0.48	0.19	
	NDG-24-008	123.50	124.40	0.90	0.15	0.17	
	NDG-24-008	159.50	161.00	1.50	0.17	0.15	
	NDG-24-008	200.40	201.60	1.20	0.13	0.09	
	NDG-24-008	215.30	226.00	10.70	0.46	0.32	
	including	222.00	223.00	1.00	3.53	1.93	
	NDG-24-008	235.40	237.00	1.60	0.10	0.07	
	NDG-24-009	41.50	42.90	1.40	0.19	0.09	
	NDG-24-009	78.95	80.00	1.05	0.10	0.08	
	NDG-24-010	36.00	37.50	1.50		0.13	
NDG-24-010	100.00	101.50	1.50		0.34		
NDG-24-010	119.50	121.00	1.50		0.31		

CONT.	Hole	From	To	Length	Au g/t (PA)	Au g/t (FA)	Au g/t (Screen)	
SUMMER	PLU-24-001	39.00	40.00	1.00		0.11		
	PLU-24-001	48.00	49.00	1.00		0.17		
	PLU-24-001	83.00	84.00	1.00		0.10		
	PLU-24-001	104.00	107.75	3.75	73.72	30.78	78.88	
	including	104.90	105.50	0.60	350.00	145.00	370.00	
	including	106.90	107.75	0.85	0.02	0.68	3.15	
	PLU-24-001	175.00	176.50	1.50		0.18		
	PLU-24-002	77.50	79.20	1.70		0.11		
	PLU-24-002	81.00	83.00	2.00		0.17		
	PLU-24-002	88.50	90.00	1.50		0.72		
	PLU-24-002	218.50	221.00	2.50		2.03	1.16	
	including	218.50	219.00	0.50		5.02		
	PLU-24-003	115.24	116.00	0.76		0.15		
	PLU-24-003	127.70	128.00	0.30		0.50		
	PLU-24-003	157.81	159.45	1.64		0.19		
	PLU-24-003	161.00	162.60	1.60	3.89	6.19		
	PLU-24-003	172.52	173.25	0.73		0.68		
	PLU-24-003	238.00	239.00	1.00		0.38		
	PLU-24-004	139.12	141.00	1.88		10.22	5.23	
	including	139.12	140.00	0.88	14.34	21.60	11.10	
	PLU-24-004	152.00	154.00	2.00		0.76	0.64	
	including	152.00	153.17	1.17	0.93	1.26	0.96	
	FALL	PLU-24-005	49.00	50.00	1.00	0.17	0.07	
		PLU-24-005	79.00	90.00	11.00	0.52	0.71	
PLU-24-005		260.00	261.00	1.00	0.32	0.39		
PLU-24-005		325.53	326.00	0.47	1.22	0.71		
PLU-24-005		369.50	382.00	12.50	0.13	0.09		
including		369.50	374.50	5.00	0.19	0.13		
including		380.50	382.00	1.50	0.26	0.27		
PLU-24-006		98.00	104.00	6.00	0.36	0.29		
PLU-24-006		110.00	113.00	3.00	0.27	0.21		
PLU-24-006		222.50	224.00	1.50	0.11	0.01		
PLU-24-006		317.00	330.50	13.50	0.38	0.37		
including		317.00	321.00	4.00	1.13	0.96		
PLU-24-006		344.00	345.00	1.00	0.19	0.56		
PLU-24-006		353.00	354.00	1.00	0.31	0.09		
PLU-24-006		383.00	384.00	1.00	0.47	0.40		
PLU-24-006		388.22	389.23	1.01	0.63	0.73		
PLU-24-006		396.50	398.00	1.50	0.46	0.37		
PLU-24-006		447.00	448.00	1.00	0.05	0.12		
PLU-24-006		465.50	467.00	1.50	0.17	0.12		

CONT.	Hole	From	To	Length	Au g/t (PA)	Au g/t (FA)	Au g/t (Screen)
FALL cont.	PLU-24-007	74.00	75.00	1.00	0.19	0.17	
	PLU-24-007	75.98	77.50	1.52	0.17	0.10	
	PLU-24-007	180.21	182.97	2.76	0.35	0.07	
	PLU-24-007	198.00	199.00	1.00	0.10	0.08	
	PLU-24-007	201.50	212.00	10.50	0.13	0.23	
	including	210.50	212.00	1.50	0.31	0.97	
	PLU-24-007	234.50	236.00	1.50	0.12	0.10	
	PLU-24-007	249.50	251.00	1.50	0.13	0.13	
	PLU-24-007	263.00	264.50	1.50	0.14	0.24	
	PLU-24-007	270.50	273.50	3.00	0.15	0.04	
	PLU-24-007	297.00	313.00	16.00	2.72	3.97	
	including	297.00	301.00	4.00	10.73	15.78	
	including	297.00	298.00	1.00	42.02	61.20	
	PLU-24-007	327.50	329.00	1.50	0.90	0.71	
	PLU-24-007	336.50	338.00	1.50	0.26	0.25	
	PLU-24-007	345.50	347.00	1.50	0.07	0.11	
	PLU-24-007	371.00	372.50	1.50	0.02	0.14	
	PLU-24-007	480.50	482.00	1.50	0.14	0.12	
	PLU-24-008	73.50	75.00	1.50	0.06	1.40	
	PLU-24-008	76.50	78.00	1.50	0.16	0.03	
	PLU-24-008	95.50	97.00	1.50	0.29	0.45	
	PLU-24-008	235.50	237.00	1.50	0.35	0.23	
	PLU-24-008	244.50	249.00	4.50	0.30	0.25	
	PLU-24-008	402.50	404.00	1.50	0.29	0.21	
	PLU-24-009	248	251.88	3.88	0.28	0.33	
	including	249	249.70	0.70	0.85	0.86	
	PLU-24-009	254.50	256.00	1.50	0.11	0.14	
	PLU-24-010	124.00	125.50	1.50		0.39	
	PLU-24-010	196.50	199.50	3.00		0.43	
	PLU-24-011	176.00	177.50	1.50		0.16	
	PLU-24-011	179.00	180.50	1.50		0.23	
	PLU-24-011	216.50	218.00	1.50		0.12	
	PLU-24-011	228.55	230.00	1.45		0.23	
	PLU-24-011	231.50	236.00	4.50		0.74	
	PLU-24-011	257.00	258.50	1.50		0.14	
	PLU-24-011	261.50	263.00	1.50		0.13	
	Gap						
	PLU-24-015	150.00	151.50	1.50		0.15	
	Gap						
	PLU-24-016	116.00	117.50	1.50		0.89	

APPENDIX A – North Edge & Pluto Collar Coordinates

Hole	Easting	Northing	Elevation	Azimuth	Dip	Length
NDG-24-001	538351	5904725	155	180	-65	248
NDG-24-002	538420	5904667	155	0	-70	251
NDG-24-003	538400	5904640	155	45	-65	252
NDG-24-004	538332	5904627	155	45	-55	252
NDG-24-005	538332	5904627	155	315	-55	252
NDG-24-006	538440	5904895	155	359.77	-55.01	255
NDG-24-007	539015	5904590	155	334.94	-54.98	252
NDG-24-008	543880	5903710	155	334.77	-55.11	252
NDG-24-009	543550	5904020	155	45	-55	252
NDG-24-010	543455	5903995	155	325	-55	252
PLU-24-001	526659	5906774	155	250	-80	225
PLU-24-002	526659	5906774	155	250	-70	249.39
PLU-24-003	526620	5906695	155	15	-55	249
PLU-24-004	526505	5906990	155	285	-55	251
PLU-24-005	526470	5906630	155	49.9	-50	413
PLU-24-006	526470	5906630	155	50.1	-70.1	473
PLU-24-007	525950	5907265	155	39.56	-45.25	500
PLU-24-008	526795	5906381	155	40.3	-50.26	461
PLU-24-009	525390	5906580	155	350	-60	491
PLU-24-010	525980	5906680	155	10	-55	252
PLU-24-011	525390	5906580	155	350	-45	476
PLU-24-012	526740	5906486	155	50	-55	252
PLU-24-013	525390	5906580	155	350	-75	416
PLU-24-013a	525390	5906580	155	350	-75	20
PLU-24-014	526981	5906242	150	30	-55	252
PLU-24-014a	526981	5906242	150	30	-55	54
PLU-24-015	529165	5905805	155	20	-45	347
PLU-24-016	526181	5907288	155	55	-60	150

APPENDIX A – Metallurgical Test Work: Vespa

- It is a new large (+100km²) metal rich intrusive complex in ROF
- Contains High Purity Iron, Titanium, Vanadium and Scandium
- Platinum + palladium has emerged adjacent to main zone
- Copper + nickel + cobalt sulphides intersected
- It has worked well and both samples produced saleable iron-vanadium and titanium concentrates
- **High-grade con** – basic mag separation produces **93.9% Magnetite (68.7% Fe)**, 5.1% Ilmenite (1.6% Ti) and 2x% V₂O₅ (1.1% V)
- **HG Tails** gravity separation **69.7% Ilmenite** (22 %Ti) and 7.1% magnetite (30.7% Fe)
- **Halo con** – basic mag separation produces **97.2% magnetite (70.0% Fe)** and 1.2% Ilmenite (0.4% Ti) and 2x% V₂O₅ (1.2%V)
- Halo tails – have not run gravity on tails for Halo
- Scandium in HG tails concentrates to 79.3 gpt (more work required on Scandium)

